

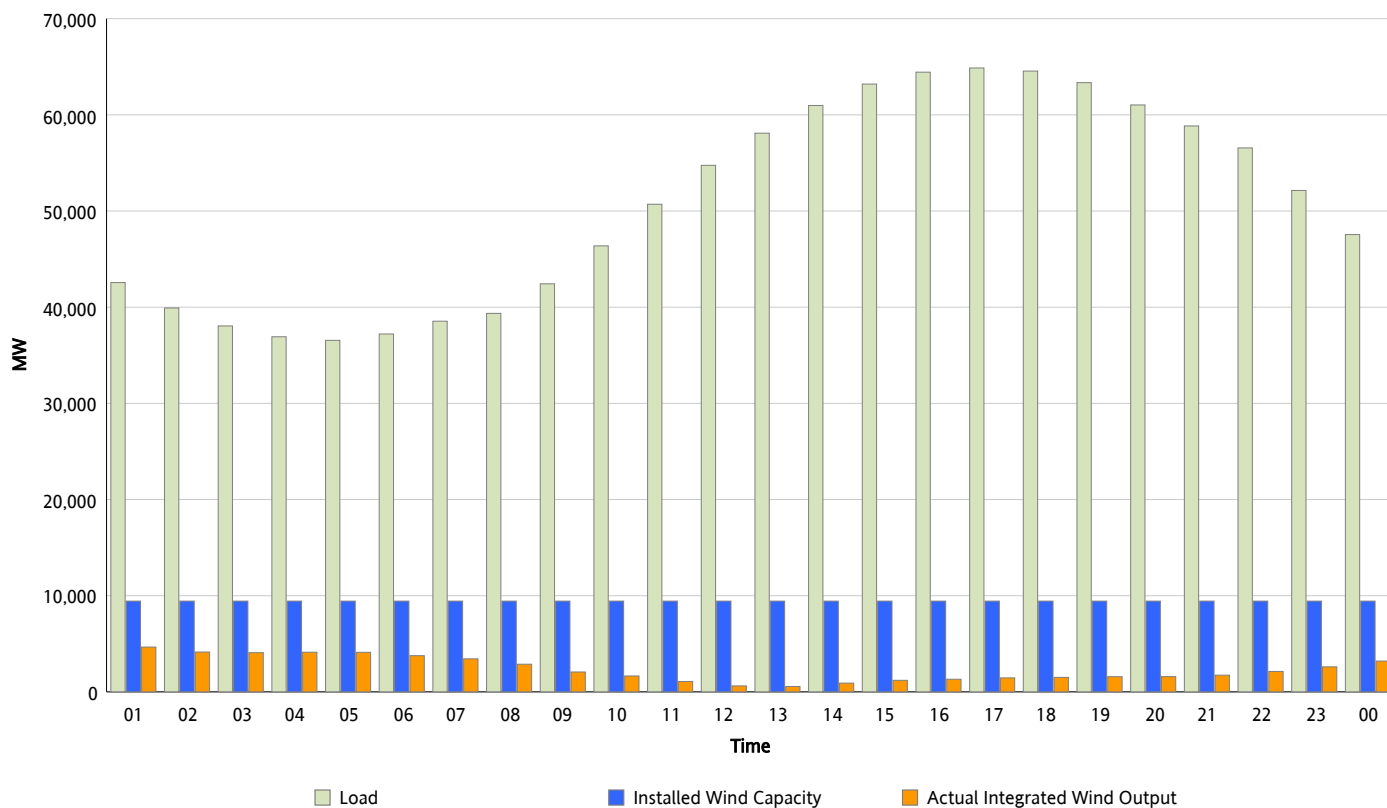


## ERCOT Grid Operations

### Wind Integration Report : 07/30/2012

Peak Load	64,877 MW
Load Peak Hour (HE)	17
Wind Over Peak	1,455 MW
Wind Record 06/19/12	8,368 MW
Max Wind Value*	4,852 MW
Wind Peak Time	00:45
Wind Integration %	11.62 %

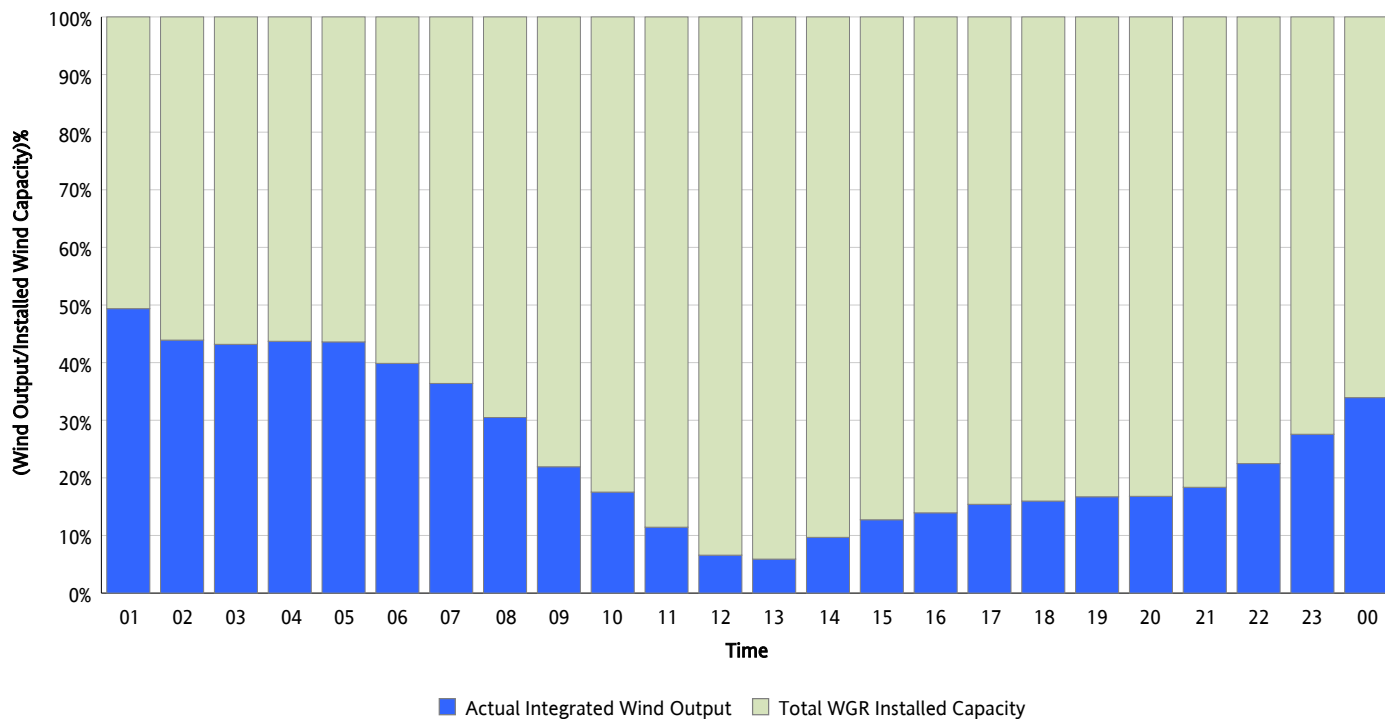
**Hourly Average Actual Load vs. Actual Wind Output**  
**07/30/2012**



\* Wind Record and Wind Max represent instantaneous values and the rest of the values are integrated over the hour

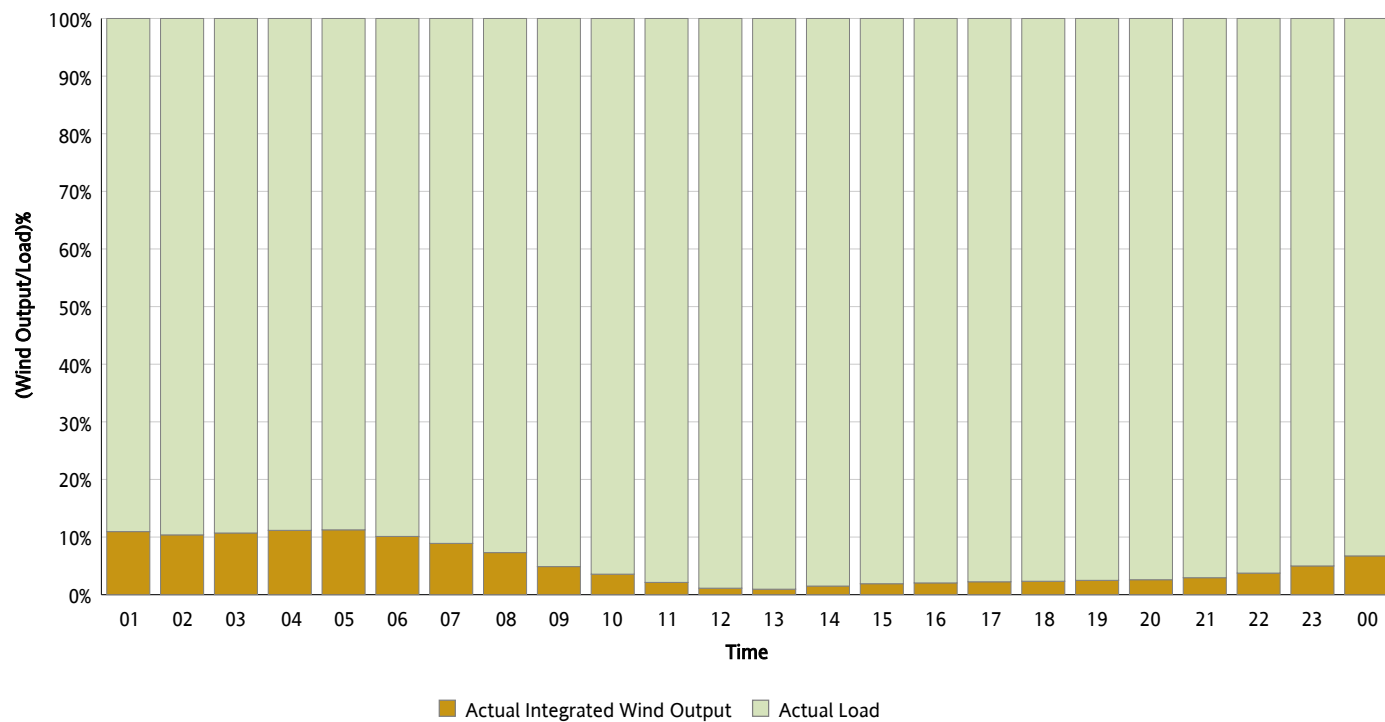
## Actual Wind Output as a Percentage of the Total Installed Wind Capacity

07/30/2012



## Actual Wind Output as a Percentage of the ERCOT Load

07/30/2012



## ERCOT Load vs. Actual Wind Output

07/23/2012 - 07/30/2012

